

REVISED

GARY PUBLIC LIBRARY

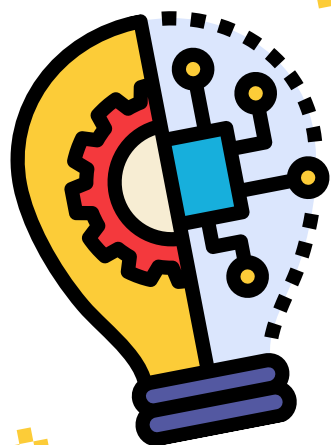
MAKERSPACE

MARCH / APRIL 2026

Main Library 220 W. 5th Ave.

Must Register at 219-886-2484 ext. 332

Sessions start promptly at scheduled time.



OPEN LAB • FRIDAYS & SATURDAYS

MARCH 28 (10AM - 12PM)

APRIL 11, 17, 25 (1 - 4PM)

SEWING • TUESDAYS & THURSDAYS

MARCH 26, 31 (1 - 3PM)

APRIL 2, 7, 9, 14, 16, 21, 23, 28, 30 (1 - 3PM)

CRICUT • THURSDAYS BEGINNERS/INTERMEDIATES

MARCH 26 (3:30 - 6PM)

APRIL 2, 9, 16, 23, 30 (3:30 - 6PM)

CRICUT ADVANCED • TUESDAYS

MARCH 31 (3 - 4:30PM)

APRIL 7, 14, 21, 28 (3 - 4:30PM)

3D PRINTING • WEDNESDAYS

MARCH 25 (5 - 7PM)

APRIL 1, 8, 15, 22, 29 (5 - 7PM)

ARTS • MONDAYS & WEDNESDAYS

MARCH 25, 30 (1 - 2:30PM)

APRIL 1, 6, 8, 13, 15, 20, 22, 27, 29 (1 - 2:30PM)

TEEN ZONE

STEAM activities and other programming presented by GPL Youth Services

MARCH 25 (5 - 7PM)

MARCH 26 (6 - 7PM)

MARCH 28 (1 - 4PM)

APRIL 1 (3 - 5PM)

APRIL 6, 13, 20, 27 (2:30 - 4PM)

APRIL 8, 15, 22, 29 (5 - 7PM)

APRIL 11, 25 (10AM - 12PM)

www.garypubliclibrary.org

The MakerSpace Lab was made possible in part (or in whole) by a grant from the Legacy Foundation, U.S. Steel, the City of Gary, and the John S. and James L. Knight Donor Advised Fund held at the Legacy Foundation.

